



SpeedDome Programming Using the Control Panel

***SecureMasterUSA, LLC
Seattle, WA 98146
206-351-1616 Tel
206-260-0101 Fax
www.SecureMasterUSA.com***

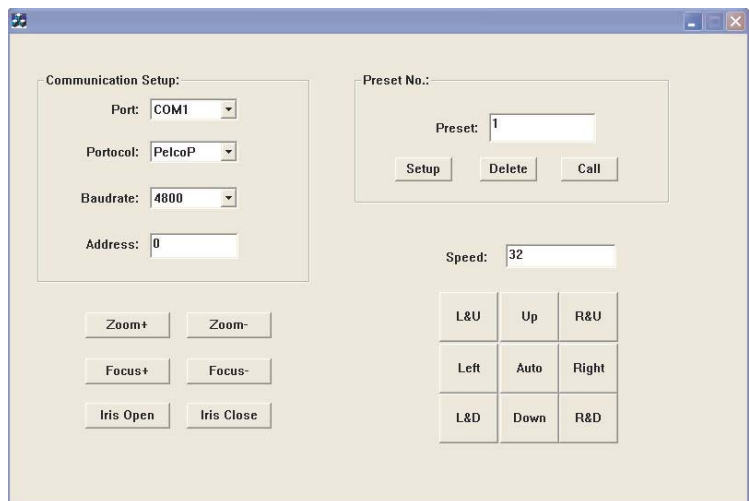




Programming Guide for PTZ SpeedDome Cameras



Programming the SpeedDome with the Control Panel is easy and quick. You can use a laptop or PC by using a Serial Port, RS485 adaptor. Connect the A (+) and B (-) terminals on the RS485 adaptor to the appropriate leads on the SpeedDome. Use the table on page three to determine the proper wires on the speeddome.



**SpeedDome Control Panel
Fig. 1**

Control Panel Operation

- 1. Insert the RS485 Adaptor into the DB9 Serial Port in a PC or laptop.**
- 2. Connect a UTP (Unshielded Twisted Pair) cable to the A (+) and B (-) terminals on the RS485 adaptor.**



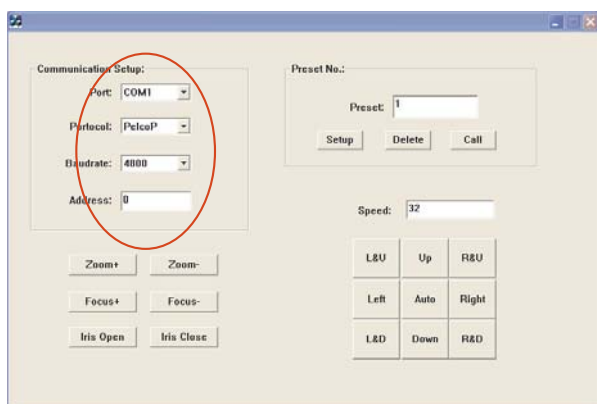
RS485 Adaptor



3. Connect the other end of the UTP cable to the SpeedDome. Use table 3 to match the wire colors.
4. Insert the original CDROM in your computer and click on "Utilities". Open up "Control Panel", then click on "ControlApp.exe". The Control Panel Screen will pop up.

Color	Function	Data	Note
Red (DC12+)	Dome power	DC12V+	Power Supply
Black (DC12-)	Dome power	DC12V-	
Brown	RS485	A	Communication
White	RS485	B	
Yellow	Fan/Heater	DC12V+	DC12V Power
White	Fan/Heater	DC12V-	
Special Order	Fan/Heater	AC24V	AC24V Power
Special Order	Fan/Heater	AC24V	
Coaxial	Video	Inner + Shield -	Video

**SpeedDome Wiring Diagram Table
(Table 3)**



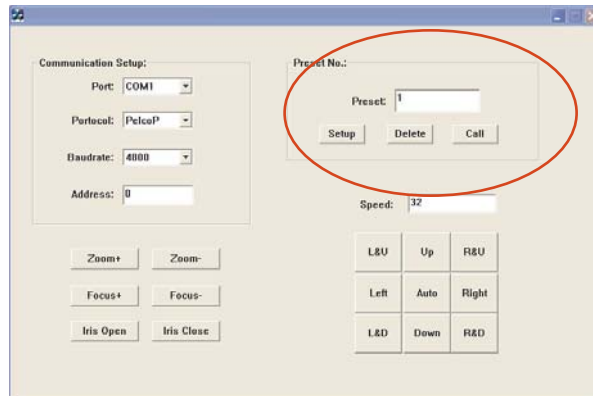
5. Select the Com port, protocol, Baud Rate, and address of the SpeedDome (See your SpeedDome User's Manual for these settings). The RCM SpeedDome Default values are "Com1", "Pelco P", "4800 Baud", and "0" address. If you use Pelco D, change the default address to "1".
6. To set the Presets, use the "Up", "Down", "Right", and "Left" buttons to move the camera to the position you want. Select the preset number you want to use (from 1-32), then hit the "Setup" button.



7. Run the Presets - To run the presets, input the number using the keypad, then press the "Call" button.

8. Delete the Preset - Input the number, then press the "Delete" button

9. Delete all Presets - Input number 77, then press the "Delete" button.



Important: The default for "AutoScan" is to rotate 360 degrees. You can set up the SpeedDome to Scan back and forth by setting up Right and Left Limitations. See number 10 below.



10. AutoScan between Right and Left limits - Move the camera to either the right or left limit then input Number 92 and press the button "Set". Do the same for the opposite limit, input Number 93, then press the button "Set".

11. To run the "AutoScan", input the number 99, then press the button "Call". To stop the "AutoScan", input the number 96, then press the button "Call".

Important: For sophisticated scanning, you can "Tour between the Presets". To do this, you must first program in at least 6 to 8 preset locations, then follow the directions in #12 below.

12. Tour between the Presets - you can run this function by inputting the number 76, then press the button "Call". To stop the Tour, input the number 96.

13. Check out our Technical White Pages for more information on RS-232, RS-422, and RS-485.

http://www.SecureMasterUSA.com/White_Pages.htm

14. For more information, see your SpeedDome Users Manual or contact us at "Tech@SecureMasterUSA.com".